

## Math 8

Our Goal: To review for the Unit 3 test

Warm Up: board problems

Today's Homework

· Chapter 3 Textbook Practice Test, p.136: 1-15

~~Previous Homework~~  
Chapter 3 Online Practice Test

· 3.2-3.4 Practice handouts

· Chapter 3 Fair Game Review

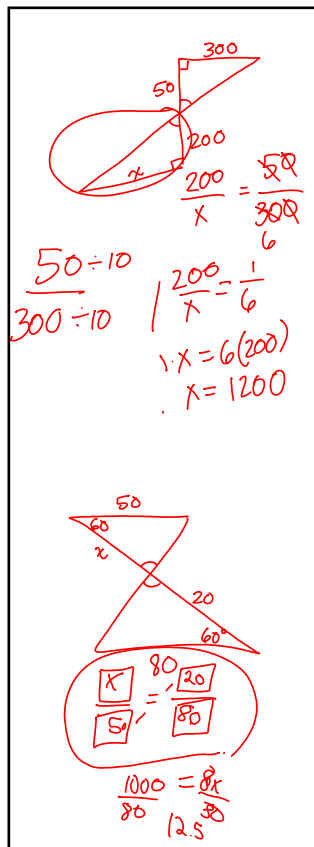
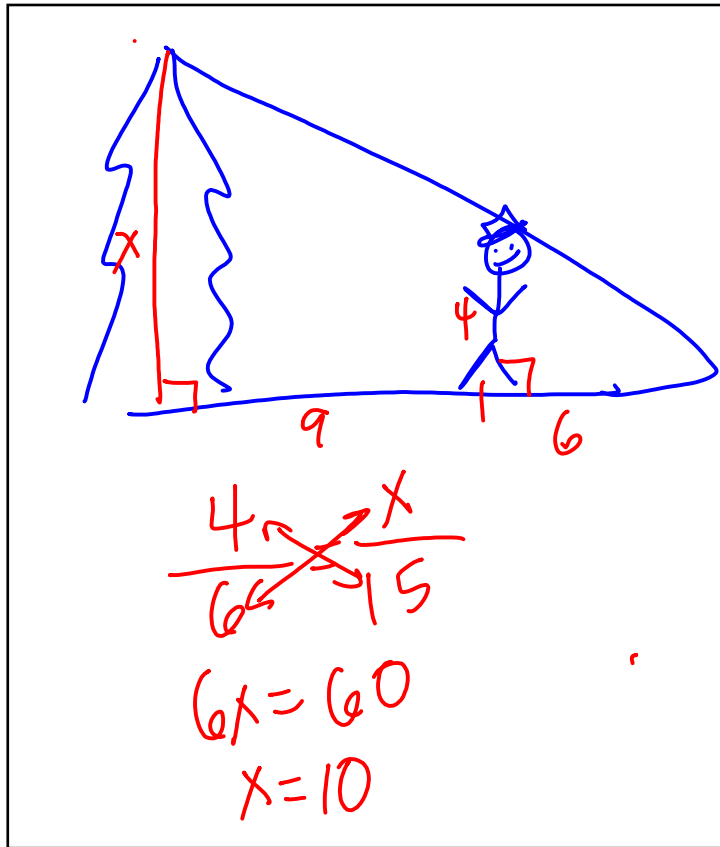


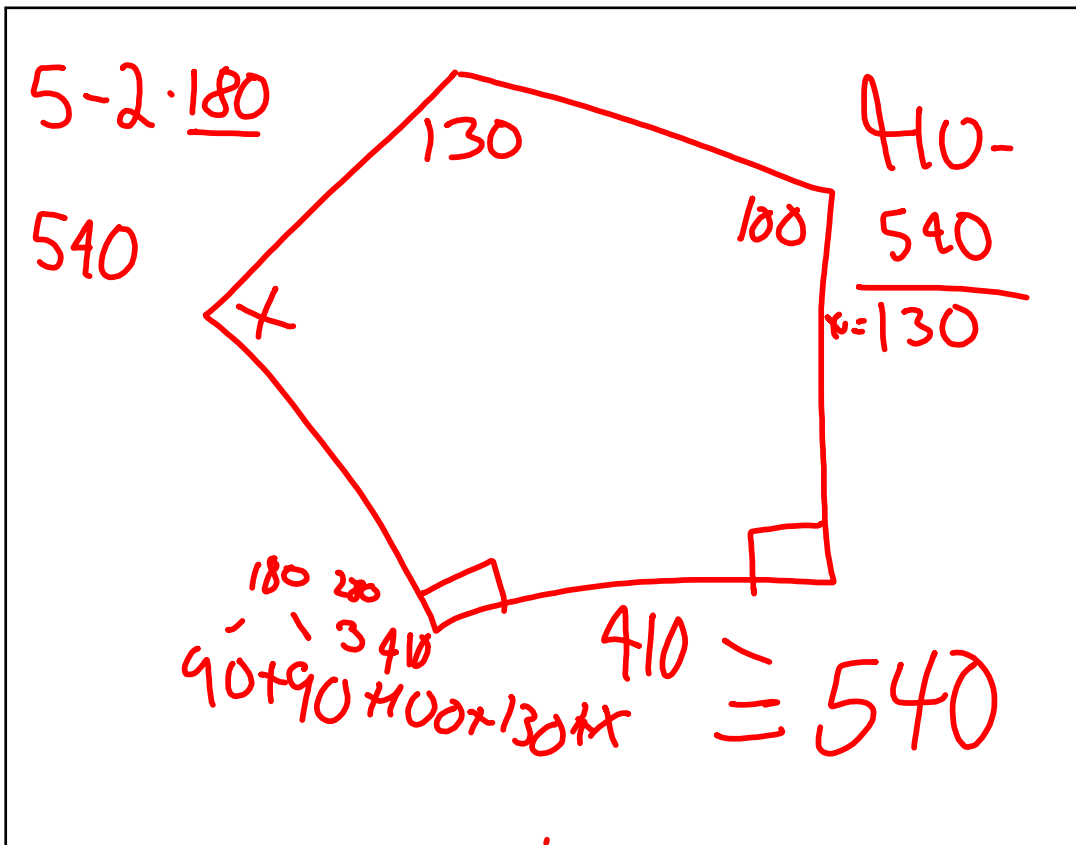
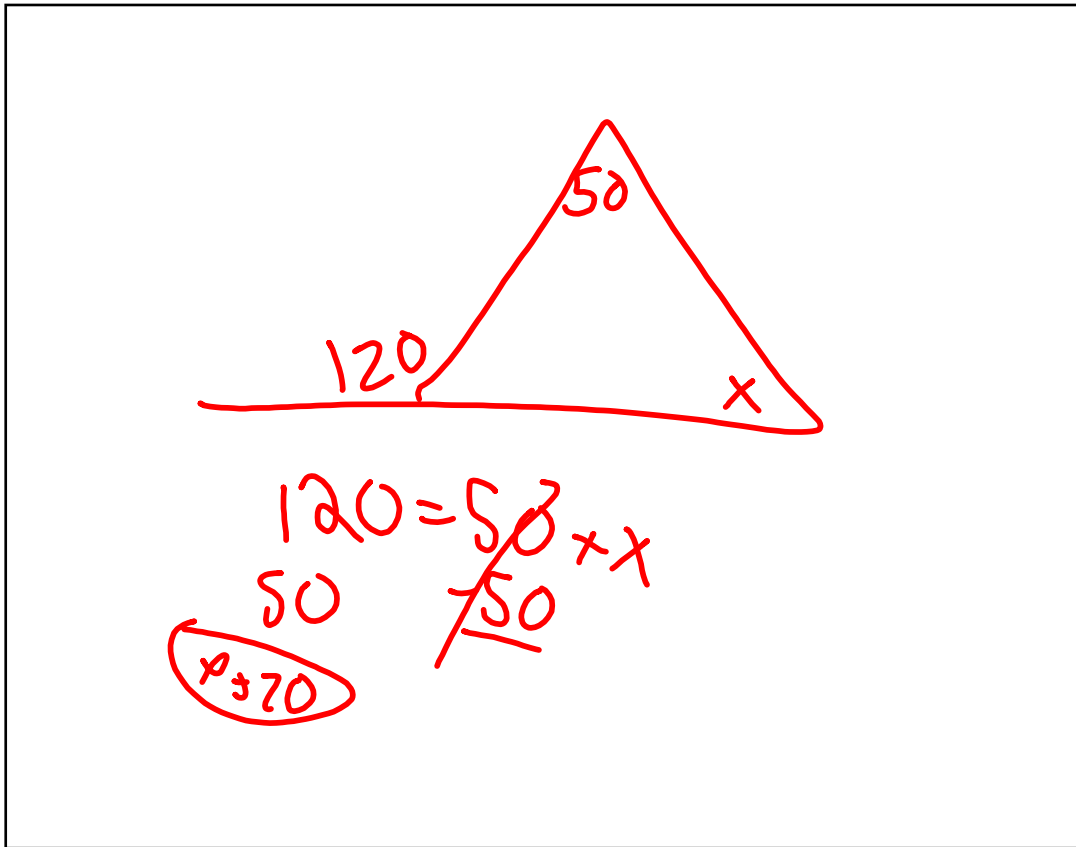
Complementary

90

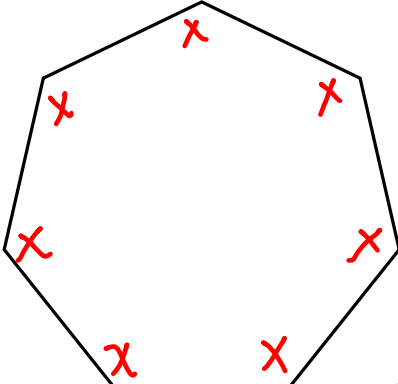
Supplementary

180



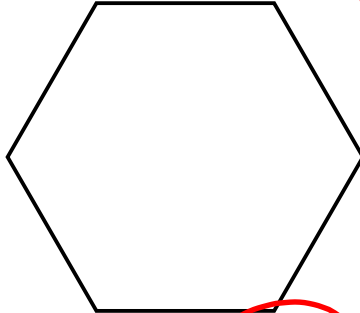


find each angle



$7 - 2 \cdot 180$   
 $5 \cdot 180$   
 $900$

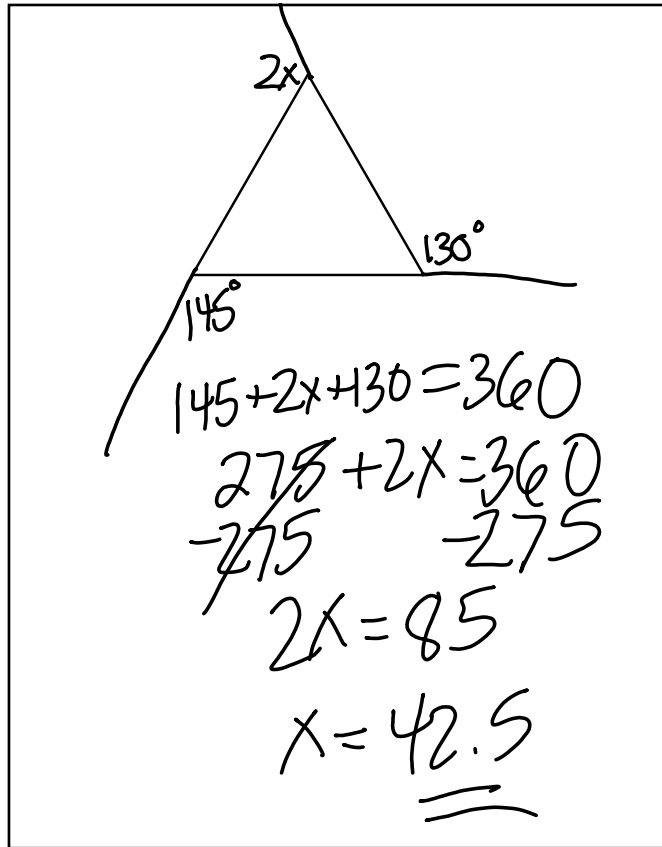
$128.6$       $\frac{7x}{7} = \frac{900}{7}$



$(6 - 2) \cdot 180$   
 $720^\circ$

Find the measure of each angle of a regular hexagon

$\frac{\text{Sum of } \angle\text{'s}}{\# \text{ of } \angle\text{'s}} = \frac{720}{6}$



$$145 + 2x + 130 = 360$$

$$275 + 2x = 360$$

$$\begin{array}{r} -275 \\ 2x = 85 \end{array}$$

$$2x = 85$$

$$x = 42.5$$